

Oracle FLEXCUBE Universal Banking® 11.3
.....**Data Model - Getting Started**
Release 1.0

May 2011

Oracle Part Number E51511-01



Contents

1	Preface.....	3
1.1	Audience	3
2	Introduction.....	3
2.1	What is in this guide.....	3
2.2	Why reverse engineering.....	3
3	FLEXCUBE UBS Data Model – getting started.....	3
3.1	FLEXCUBE UBS Data model schema	3
3.2	Oracle SQL Developer Data Modeler	4
4	Creating Data Model and ER diagram	4

1 Preface

Oracle FLEXCUBE Universal Banking Software – Data model – Getting started document describes the method to create data model for application business extensibility purpose.

1.1 Audience

This guide is intended for FLEXCUBE Application developers who need to understand the FLEXCUBE UBS data model

2 Introduction

2.1 What is in this guide

This document describes the reverse engineering methodology to get the FLEXCUBE UBS data model for a given business purpose. A given business purpose could vary from report generation to data extraction to extending FLEXCUBE application functionality.

2.2 Why reverse engineering

As the complete ER diagram of FLEXCUBE UBS application would be huge, the business application developers need to re-engineer with required filtered portion of FLEXCUBE UBS to get specific portion of data model.

Example:

There is a business requirement to add additional fields to customer personal information. The business developer could filter the Customer specific entities from FLEXCUBE UBS Database schema and generate the ER diagram. This ER diagram further can be used to understand the FLEXCUBE UBS and can be foundation for further business development requirement.

3 FLEXCUBE UBS Data Model – getting started

3.1 FLEXCUBE UBS Data model schema

1. Follow the below steps to get the Oracle FLEXCUBE UBS Data model schema.
 - a. Identify the new Oracle Database schema for data model purpose.
 - b. Create the FLEXCUBE UBS database tables by running all the DDL scripts in below folder at the schema identified.
 - FC_UBS_V.UM_11.3.0\MAIN\DATABASE\HOST\CONSOL\DDL\TABLE

- FC_UBS_V.UM_11.3.0\MAIN\DATABASE\BRANCH\CONSOL\DDL\TABLE
 - FC_UBS_V.UM_11.3.0\MAIN\DATABASE\EL\CONSOL\DDL\TABLE
- c. Create Foreign Keys in schema using following scripts at the schema identified.
- FC_UBS_V.UM_11.3.0\MAIN\DATABASE\DATAMODEL\FKR
- d. Create column comments using below scripts at the schema identified.
- FC_UBS_V.UM_11.3.0\MAIN\DATABASE\DATAMODEL\CMT

Note: The Database environment used for this data model cannot be used for other testing/production purpose.

2. You can get the data model PDF documents from below folders for each module that data model is shipped.
- FC_UBS_V.UM_11.3.0\MAIN\DATABASE\DATAMODEL\PDF

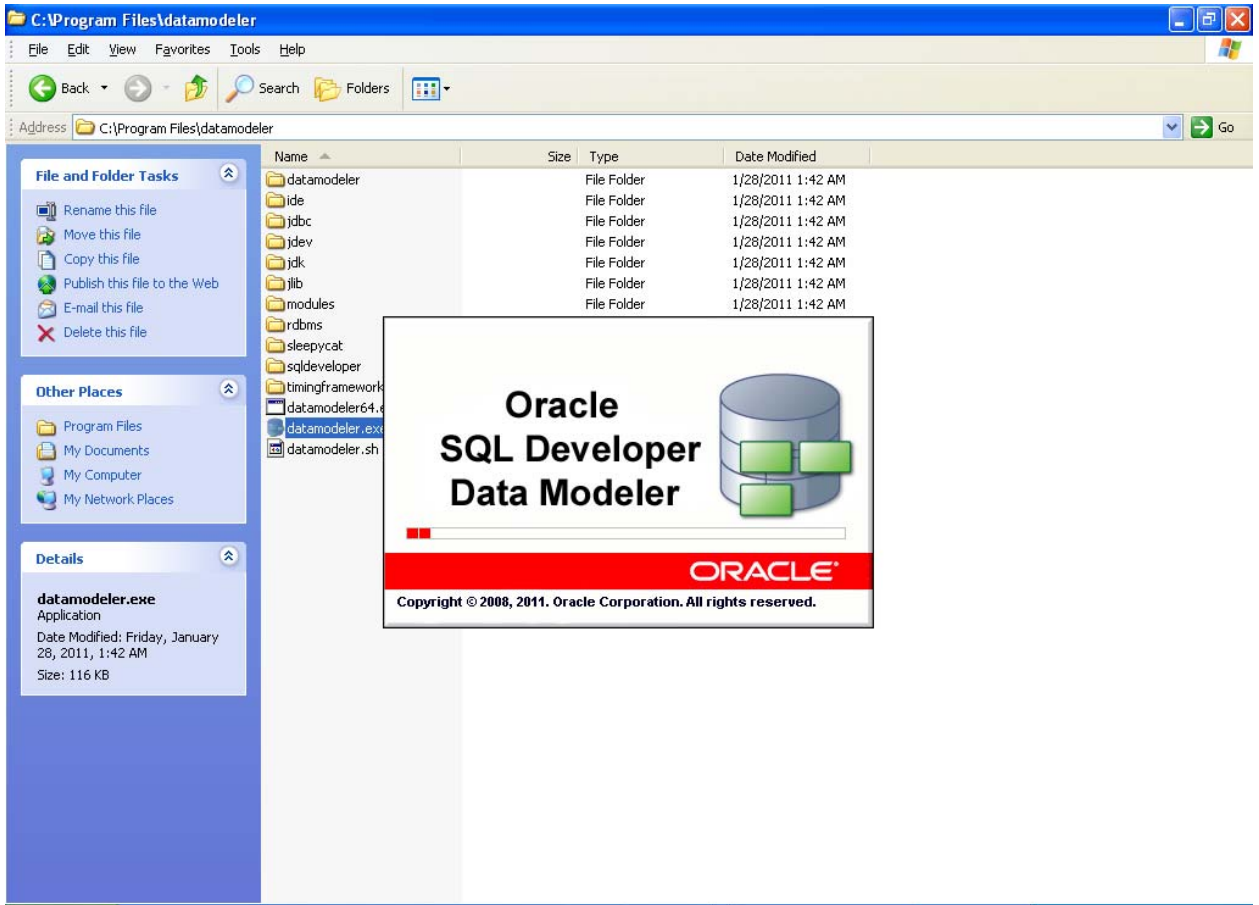
3.2 Oracle SQL Developer Data Modeler

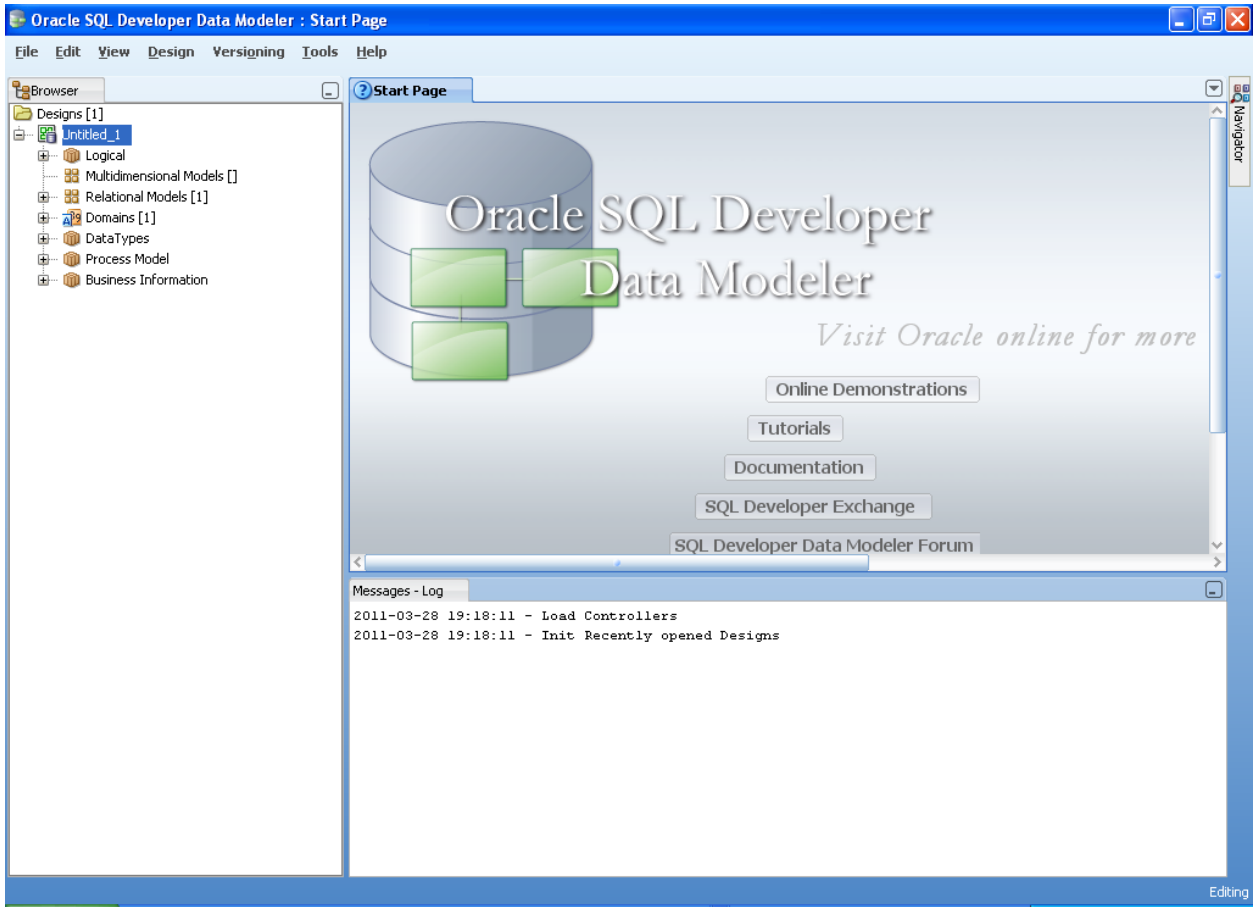
Ensure you have installed the Oracle SQL Developer Data model in your local system. Refer further Oracle documentation for download and install instructions.

<http://www.oracle.com/technetwork/developer-tools/datamodeler/downloads/index.html>

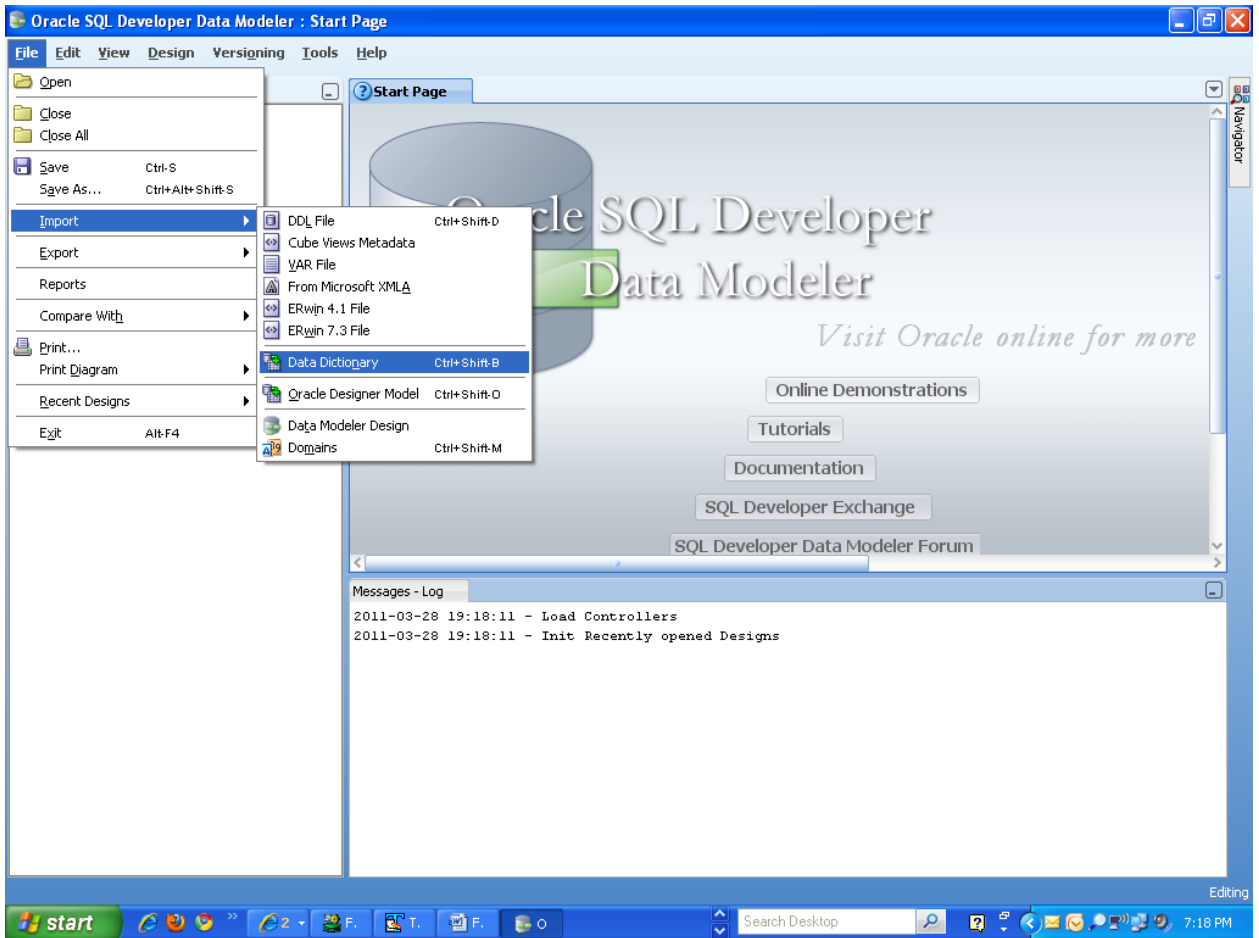
4 Creating Data Model and ER diagram

1. Open the Oracle SQL Developer Data modeler

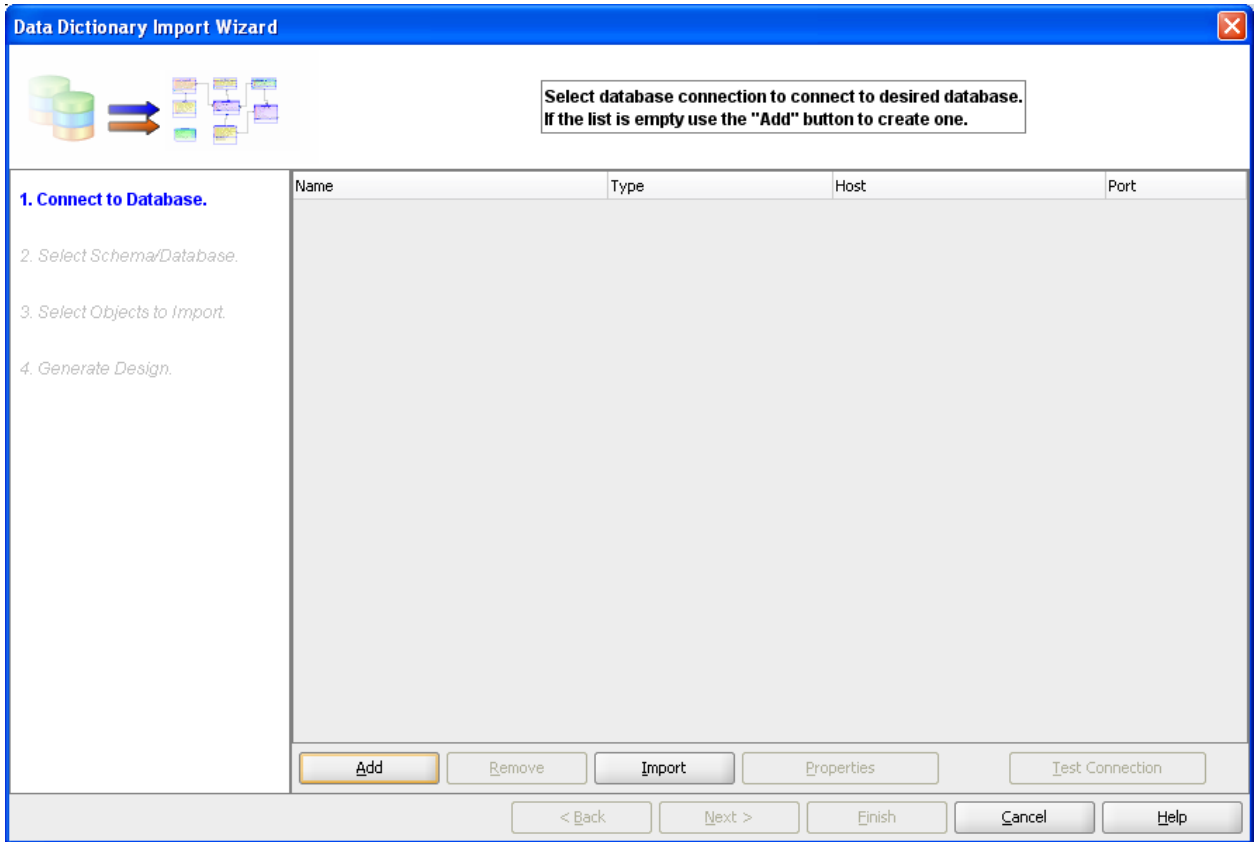




2. Click **File** → **Import** → **Data dictionary**



3. Click **Add**



4. Provide the **database connectivity** parameters

New / Update Database Connection

Connection Name: FCKERDATAMODEL

User Name: FCKERDATAMODEL

Password:

Save Password

Oracle | **JDBC ODBC Bridge**

Role: default

Connection Type: Basic

Hostname: 10.184.74.142

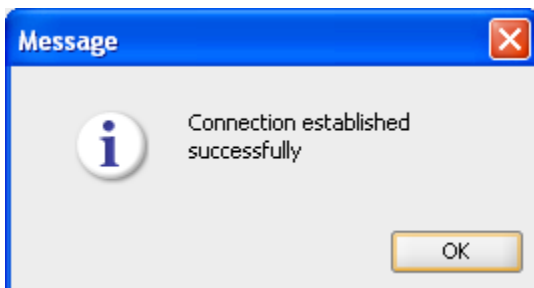
Port: 1521

SID: KERDEV2

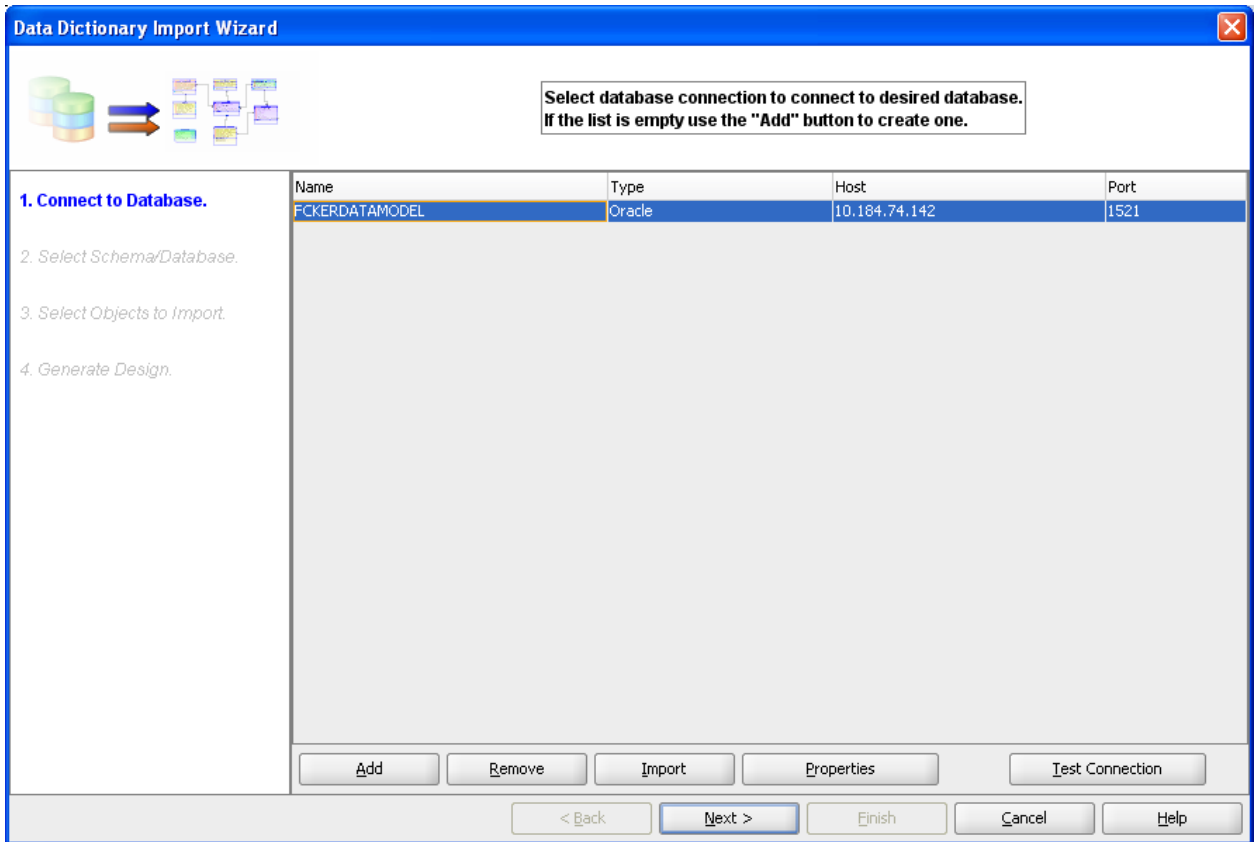
Service name:

Help Clear Test Connection OK Cancel

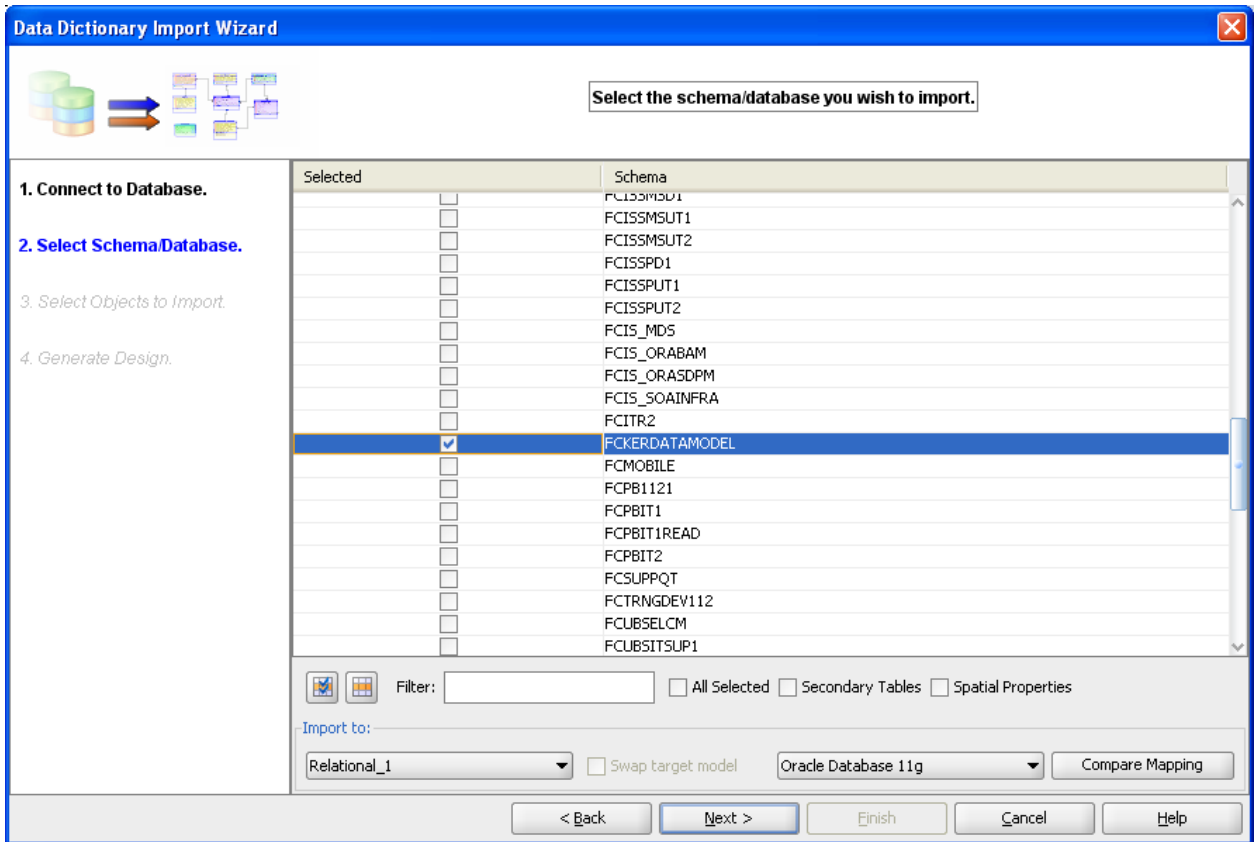
5. Click **Test Connection** and ensure it is successful. If connection fails, verify and repeat step 4



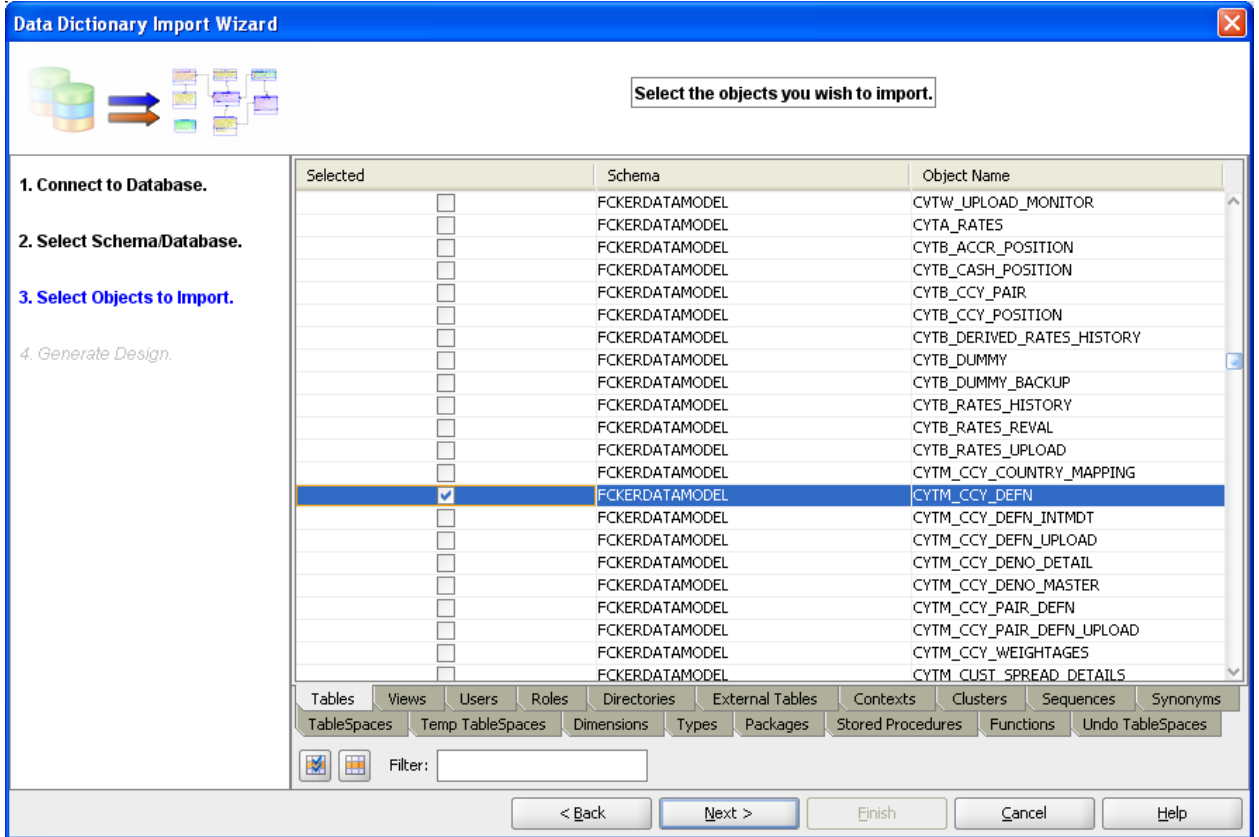
6. Click database connection row

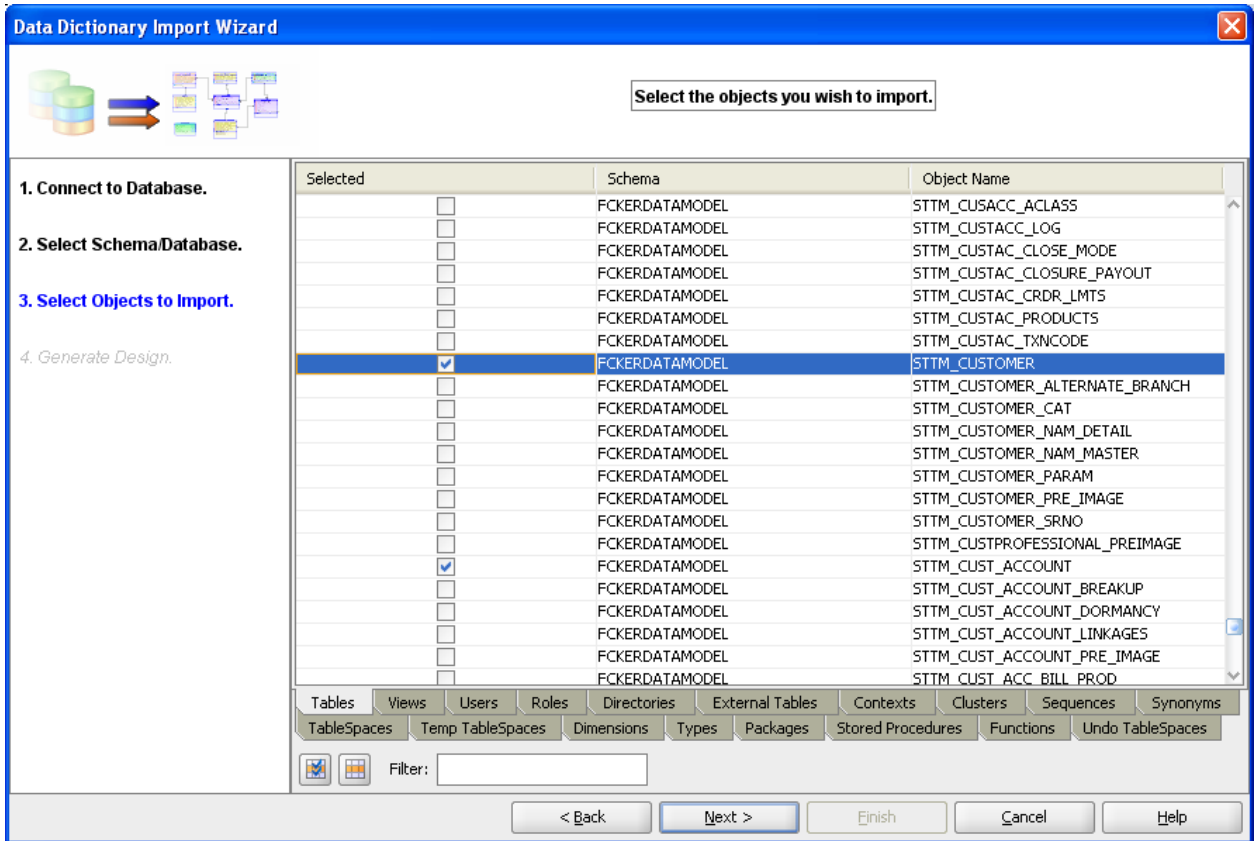


8. Select the database Schema name

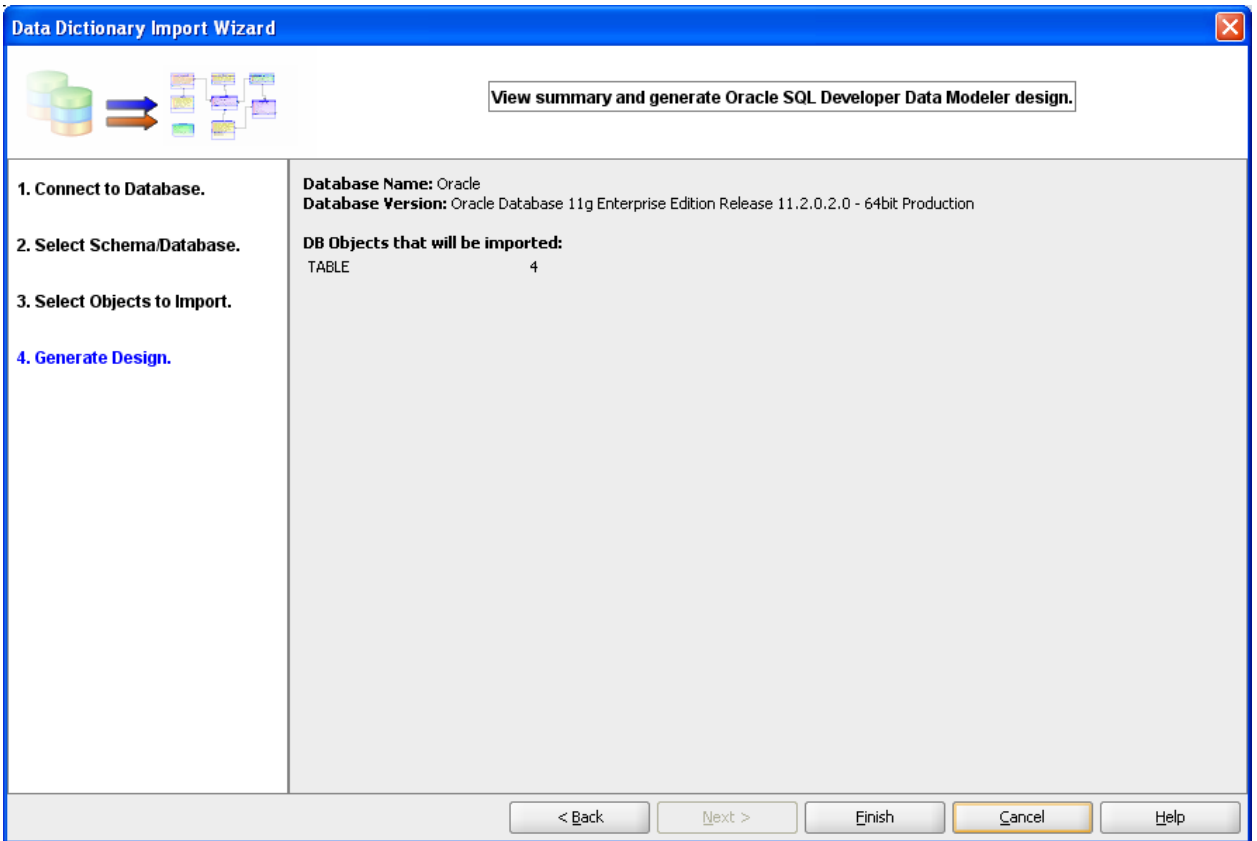


- Select the entities(tables) that are to be used in ER diagram

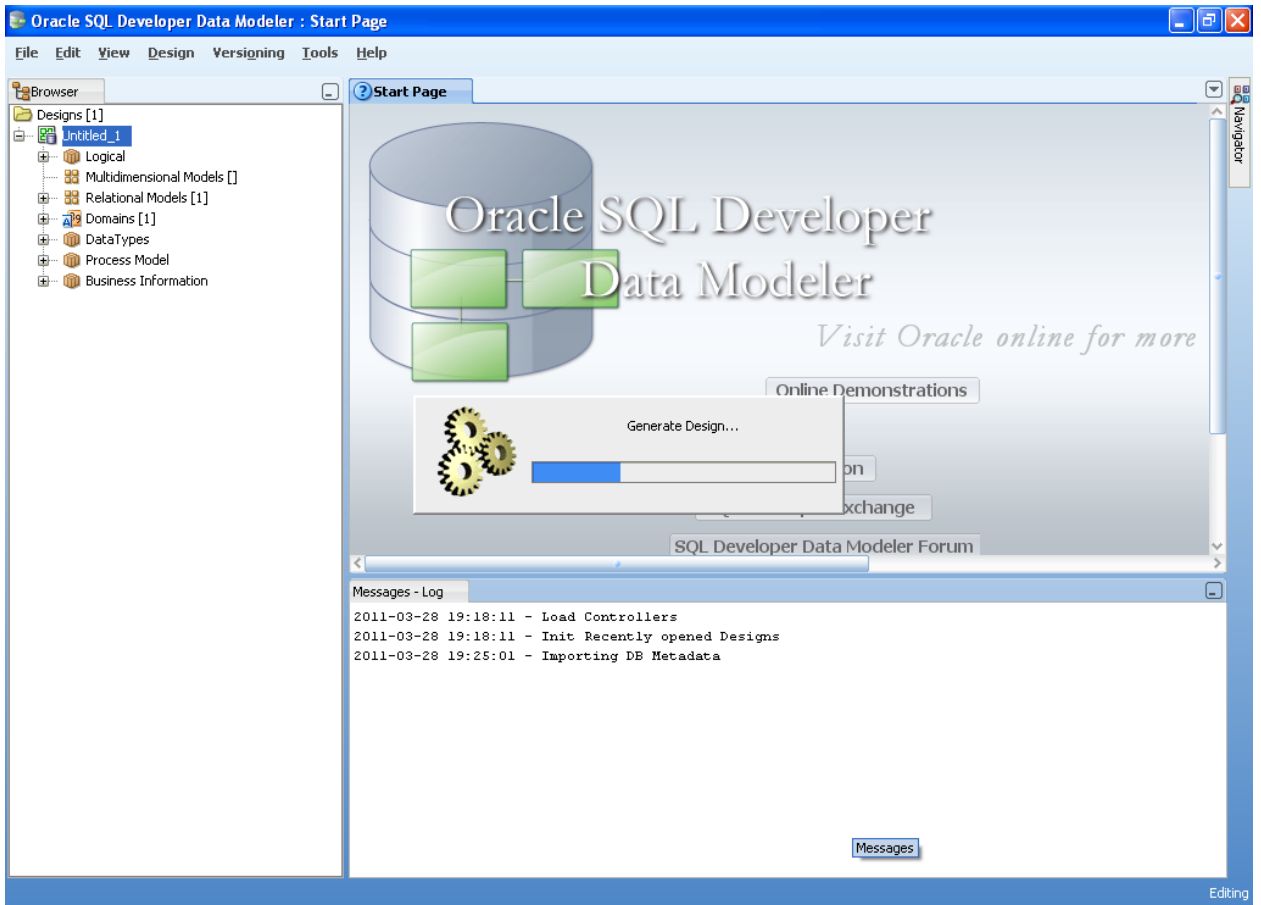


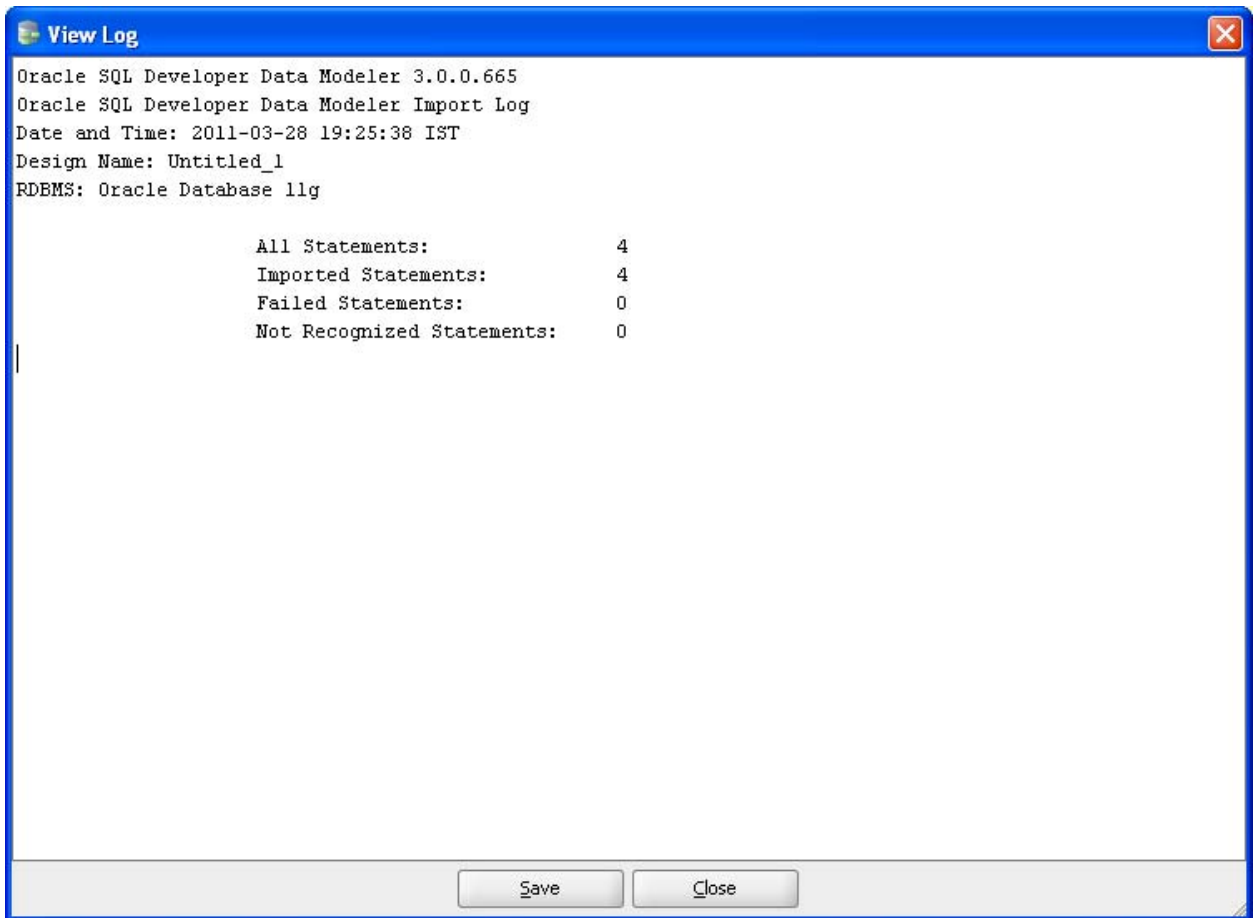


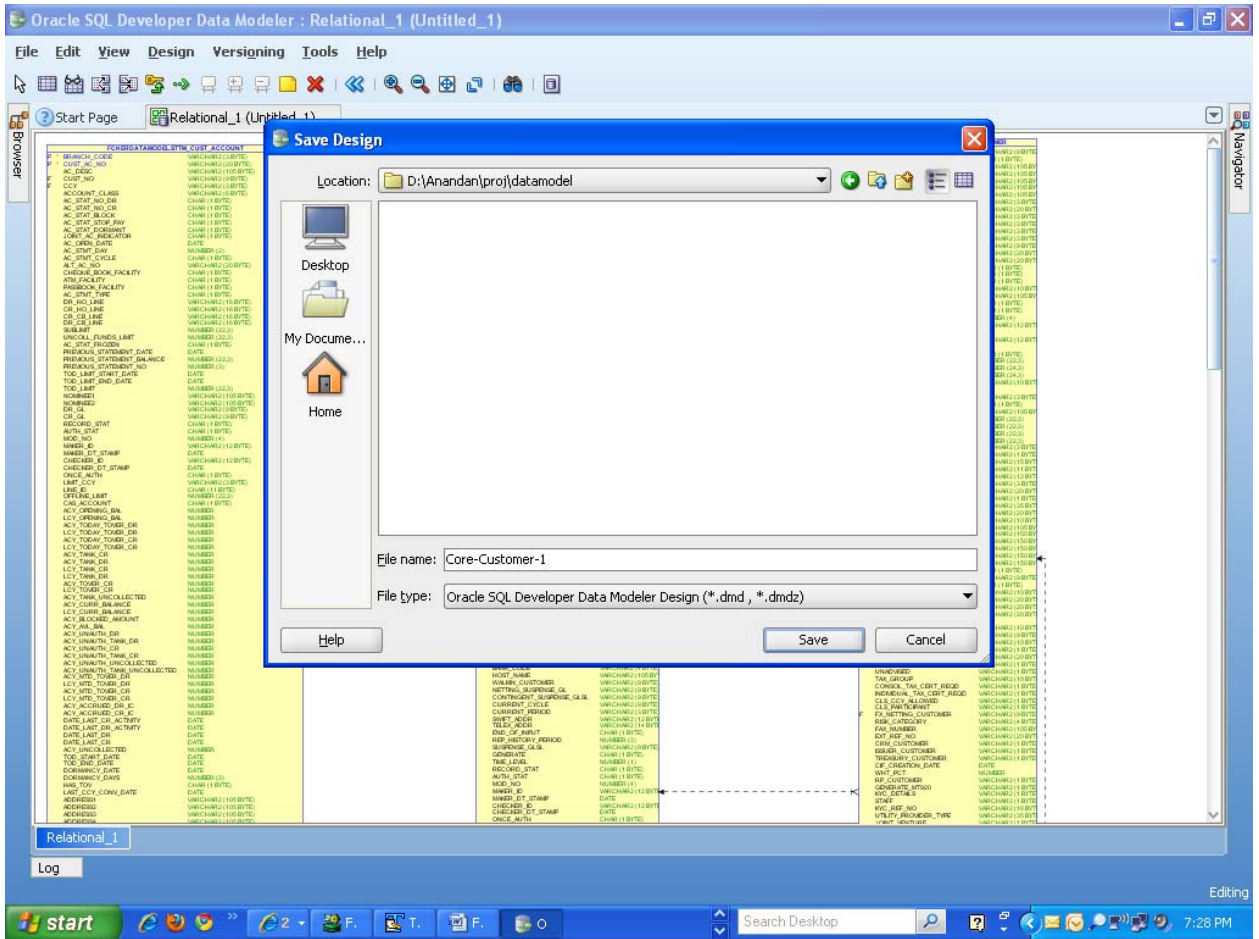
10. Click Next

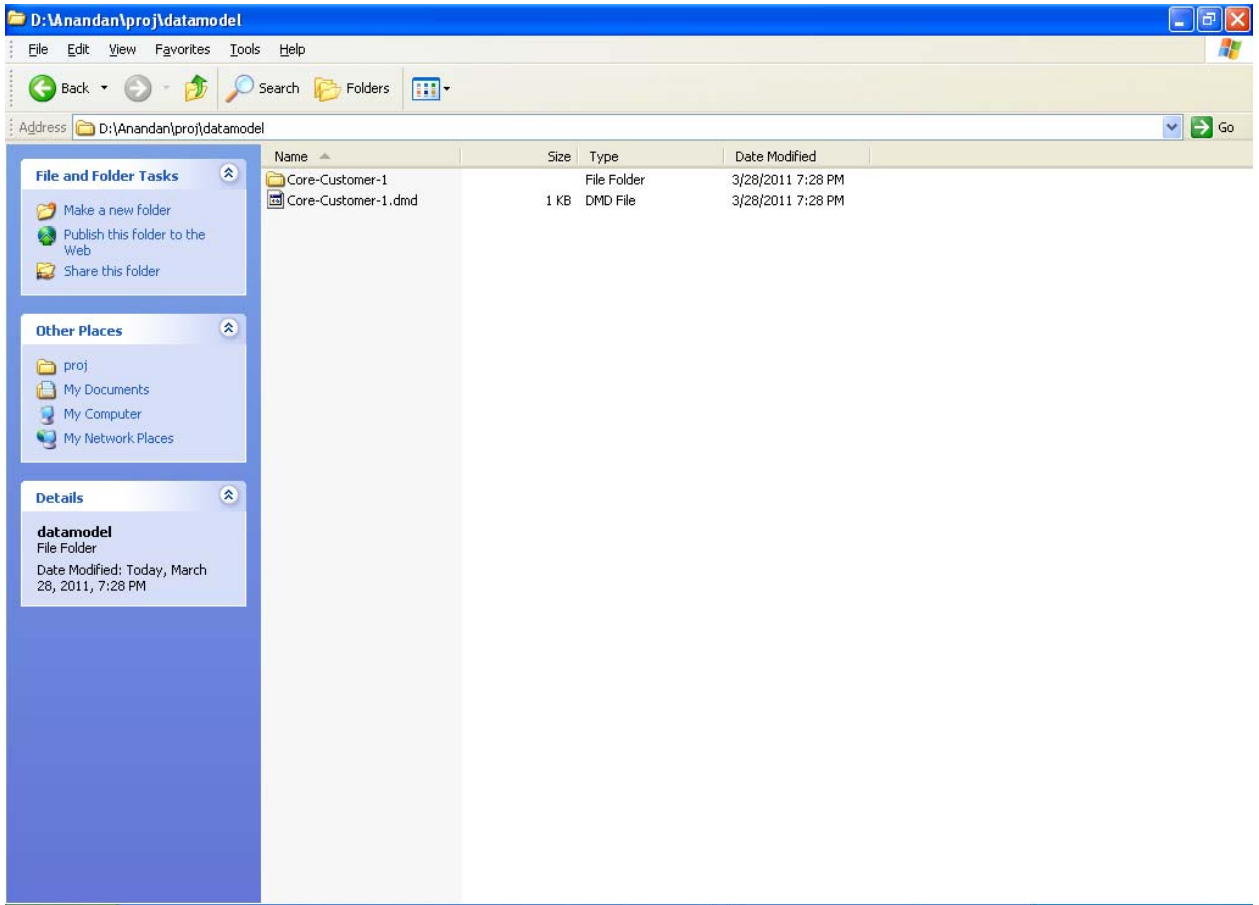


11. Click **Finish**











FCUBS-FD08-01-01-Data Model getting started

May 2011

1.0

Oracle Corporation
World Headquarters
500 Oracle Parkway
Redwood Shores, CA 94065
U.S.A.

Worldwide Inquiries:
Phone: +1.650.506.7000
Fax: +1.650.506.7200
[www.oracle.com/ financial_services/](http://www.oracle.com/financial_services/)

Copyright © 2011- Oracle Financial Services Software Limited. All rights reserved.

No part of this work may be reproduced, stored in a retrieval system, adopted or transmitted in any form or by any means, electronic, mechanical, photographic, graphic, optic recording or otherwise, translated in any language or computer language, without the prior written permission of Oracle Financial Services Software Limited.

Due care has been taken to make this document FCUBS-FD08-01-01-Data Model getting started and accompanying software package as accurate as possible. However, Oracle Financial Services Software Limited makes no representation or warranties with respect to the contents hereof and shall not be responsible for any loss or damage caused to the user by the direct or indirect use of this FCUBS-FD08-01-01-Data Model getting started and the accompanying Software System. Furthermore, Oracle Financial Services Software Limited reserves the right to alter, modify or otherwise change in any manner the content hereof, without obligation of Oracle Financial Services Software Limited to notify any person of such revision or changes.

All company and product names are trademarks of the respective companies with which they are associated.